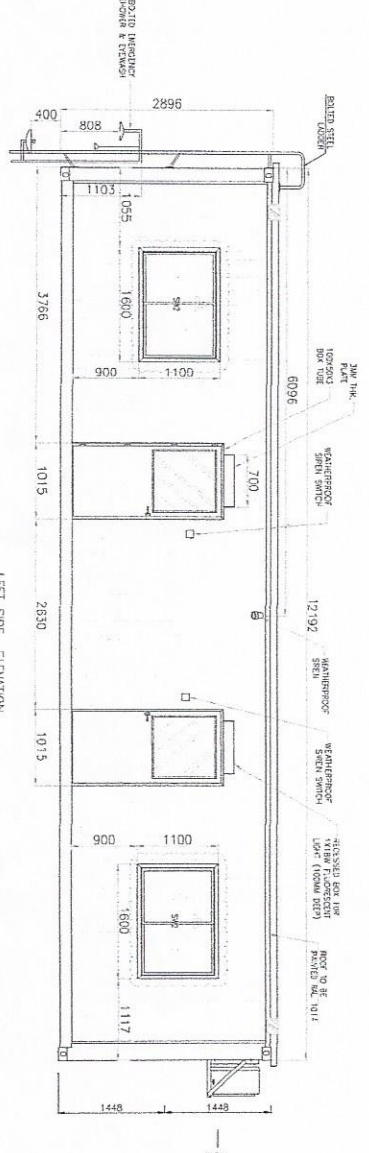
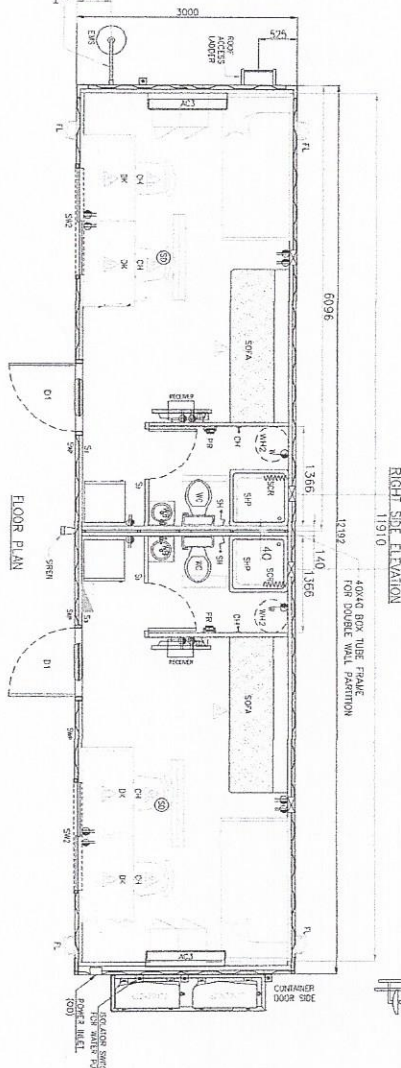
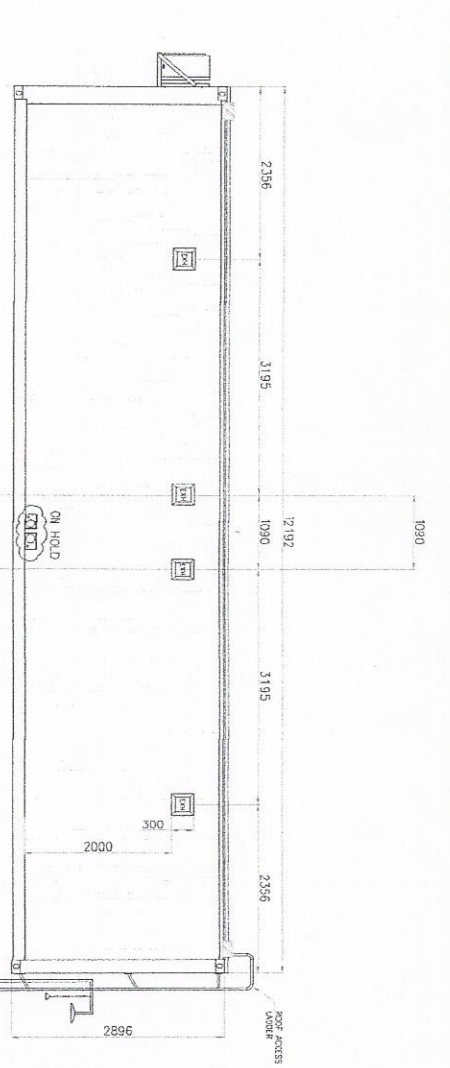
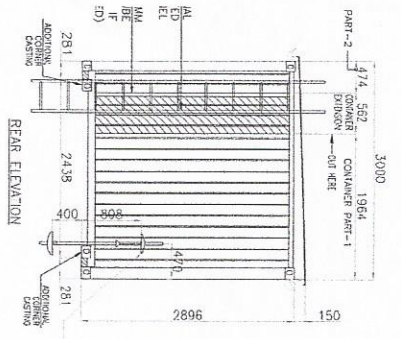


40' ACCOMMODATION

ALL
 1. SCA - APPROVED SCAFFOLD SYSTEM (1504/10/00000)
 2. SCA - STAY-IN-PLACE CONCRETE (1504/20/00000)
 3. SCA - CHASSIS
 4. SCA - STAY-IN-PLACE CONCRETE (1504/20/00000)
 5. WAG FLOORING - 6000x1200x12mm STEEL LATHES & MATRESS
 WAS CHANGED TO WATER TIGHT
 6. COLOR WAS CHANGED TO - RAL 7034



SIVA PRIME GENERATOR
 W/ ACOUSTIC ENCLOSURE
 TO BE PROVIDED BY THE CLIENT

BOM LIST

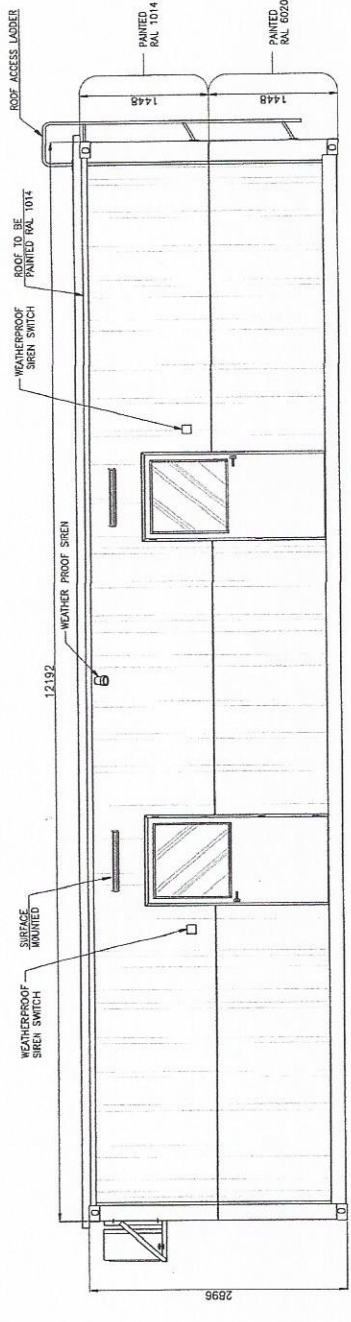
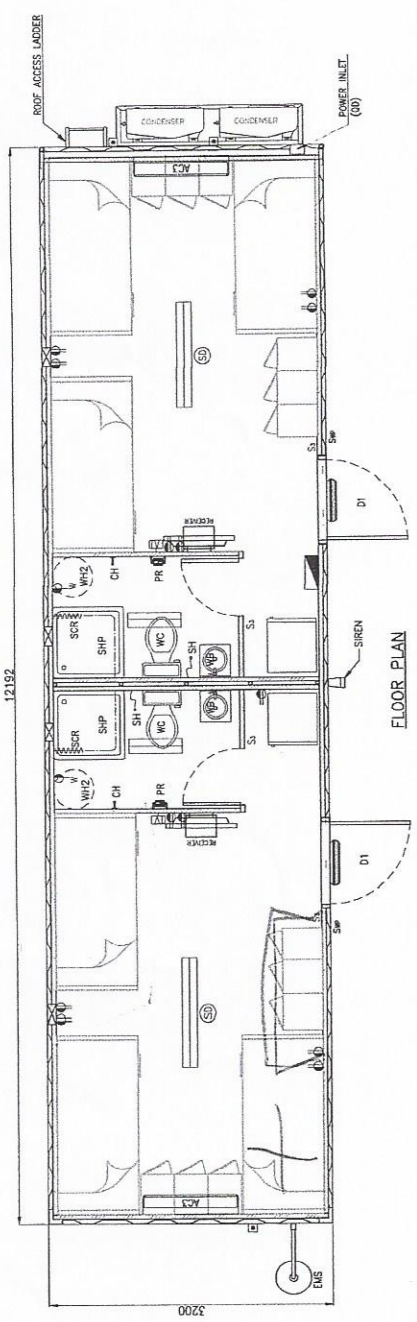
QTY.	LEGEND	DESCRIPTION
2	D1	INSULATED ALUM. DOOR W/ DOUBLE GLAZED WINDOW (915x2010mm) - COLOR RAL1015
1		DISTRIBUTION BOX, 3 PHASE
1		32A, 5 PIN - POWER INLET (QUICK DISCONNECT)
12		DOUBLE SWITCH SOCKET
2		A/C ISOLATOR SWITCH
4	S1	3 GANG - 1 WAY LIGHT SWITCH
2		TV OUTLET
2		BULKHEAD LIGHT, 1 X 18W - IP65
2		DOUBLE FLUORESCENT LIGHT (2X36W)
2		SMOKE DETECTOR
2		SPLIT TYPE A/C UNIT, 1.5 TON (MITSUBISHI MAKE)
4		6" EXHAUST FAN W/ SHUTTER
2	WC	WESTERN WATER CLOSET
2	SH	SHOWER PAN
2	SH	SHOWER HEAD W/ HOLDER
2	WB	WASH BASIN, WALL MOUNTED (STAINLESS-SMALL SIZE)
2	SH	SPRAY HOSE
2	FD	FLOOR DRAIN
2	PR	PAPER ROLL HOLDER
2	M	VANITY MIRROR
2	CH	COAT HOOK
2	SH	SHOWER CURTAIN W/ ROD
2	S/S	S/S SOAP TRAY
2	WH	WATER HEATER (60 LIT)
2		32" LCD TV
2		32" LCD WALL MOUNTED BRACKET
2		SATELLITE RECEIVER
2		SATELLITE RECEIVER WALL MOUNTED BRACKET
2		10 CU.FT. REFRIGERATOR
6		BUNK BED, WOODEN FRAME (915X2000MM)
12		MATTRESS
1		STEEL LOCKER, 1 DOOR
1		2 SIDE SLOPING SECONDARY ROOF
2	SNP	WEATHERPROOF SIREN
2		WEATHERPROOF SIREN SWITCH
1	EMS	EMERGENCY SHOWER & EYEWASH STATION
2		STEEL SEWAGE TANK, 500X800X3500MM
1		GRP WATER TANK, 1000 LIT. CAP.
1		0.50HP BOOSTER PUMP
1		18KVA PRIME GENERATOR W/ ACUSTIC ENCLOSURE
3		REMOVABLE LADDER

DRAWN BY:	NF	REVIEW BY:	PY	SCALE:	NTS
REVIEW BY:	RK	APPROVAL:	CMS	DATE:	24/06/2014

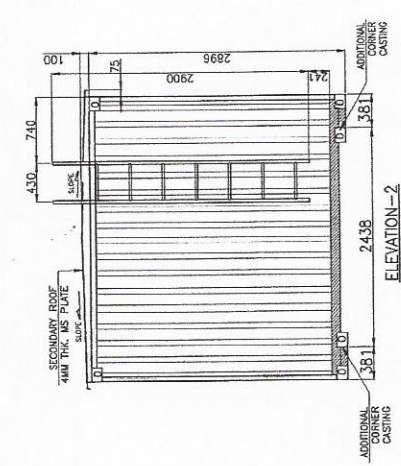
SMARTBOX
INDUSTRIES
P.O. BOX 115218, DUBAI, UAE
PLOT NO. 325 - 210, AL QUSAYB, AREA 1,
TEL: 497 8888888 / 497 888 8888
www.smartbox.ae / www.id.com

PRODUCT: 40' ACCOMMODATION (2 ROOM - 2 BATH)
DRAWING No.: 40-0014-SBI-ACWT-3485
CLIENT: MR. AL CUBAIS

APPROVED BY: _____
SMART BOX IND. IS COMMITTED TO THE CONTINUING IMPROVEMENT OF THE DESIGN AND PERFORMANCE OF ITS DESIGN. DESIGN PERFORMANCE OF ITS PRODUCTS AND THEREFORE WE RESERVE THE RIGHT TO VARY THE SPECS THE RIGHT TO VARY THE SPECS.



ELEVATION-1



ELEVATION-2

- NOTES:
- TRAILER TO BE PROVIDED BY THE CLIENT
 - CLIENT TO PROVIDED LOAD TEST FOR THE CONTAINER.
 - ELECTRICAL WIRING TO BE EXPOSED TYPE.

- REVISIONS:
- | | |
|---|--|
| 1 | |
| 2 | |
- CONTAINER TYPE: 40' HIGH CUBE (USED) SHIPPING CONTAINER WITH STRUCTURAL INTEGRITY INTACT.

PAINTING: STANDARD MARINE GRADE PAINT (SEE ELEVATION FOR COLOR)

FLOORING: 2mm THK. VINYL SHEET OVER 12MM THK. CEMENT BOARD (WHITE COLOR W/ BLUE DOTS) - PAINTED JOTOMASTIC UNDER INTERIOR WALLS & CEILING: 50MM THK. PU SANDWICH PANEL